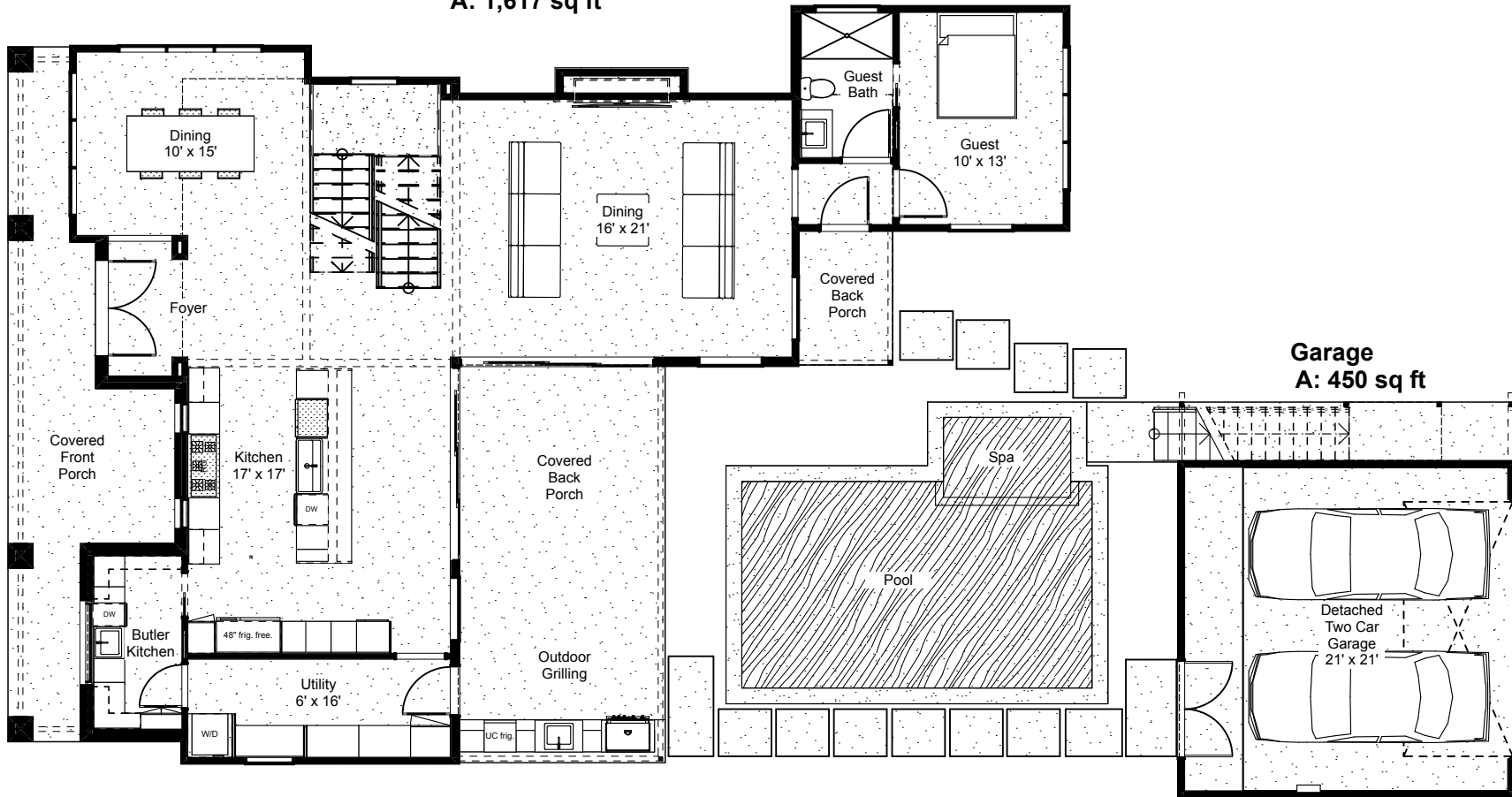


**GFA Lower Floor
A: 1,617 sq ft**



**Garage
A: 450 sq ft**

1

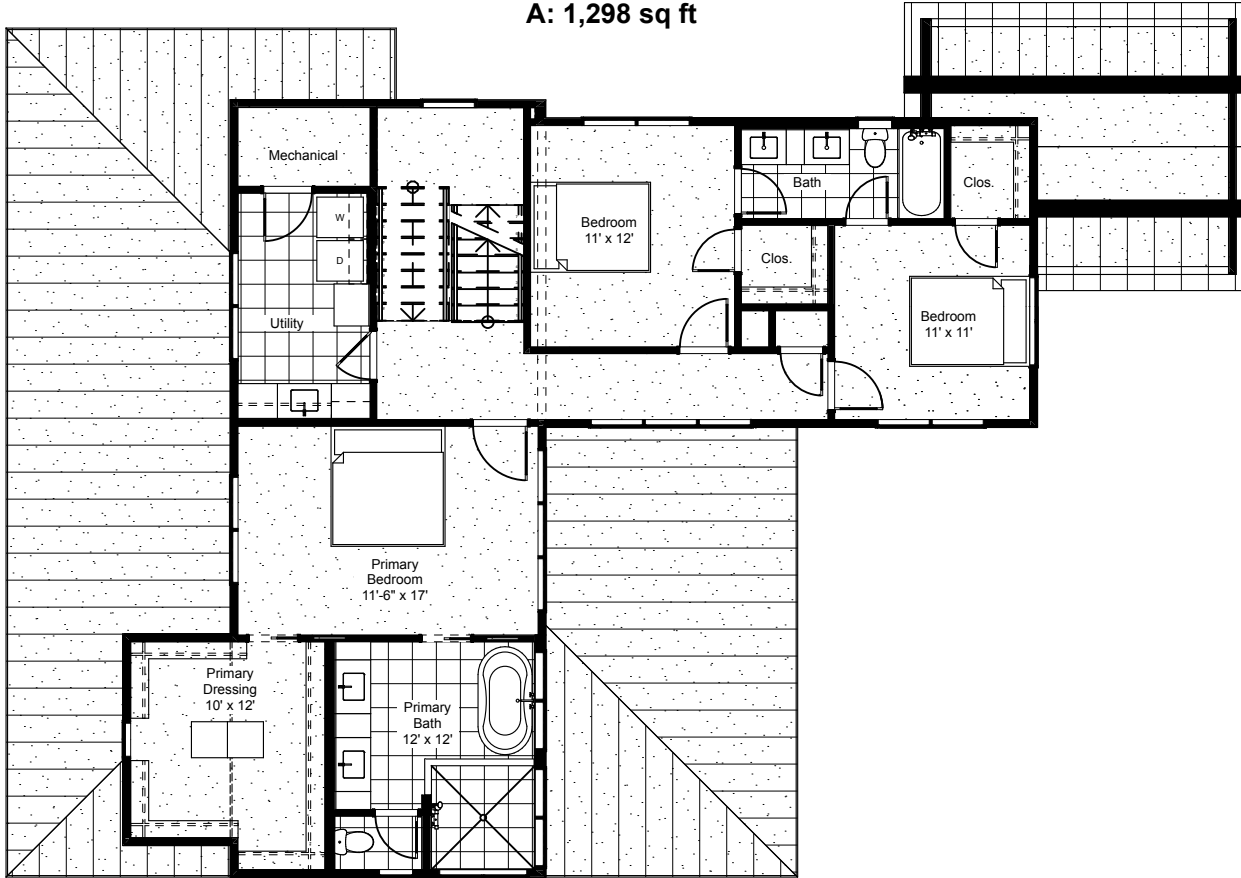
First Floor

3/32" = 1'-0"

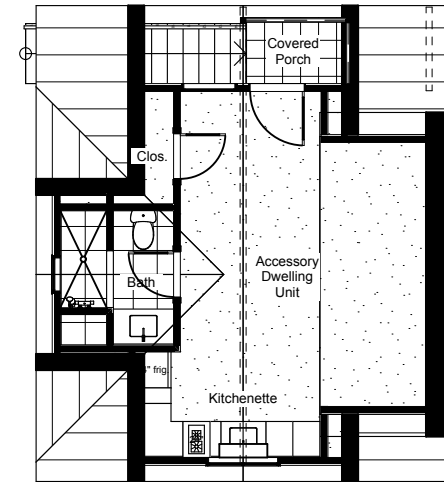
1508 Dexter Street

Areas are Gross Floor Area (GFA)
as defined by the City of
Austin Land Development Code

GFA Second Floor
A: 1,298 sq ft



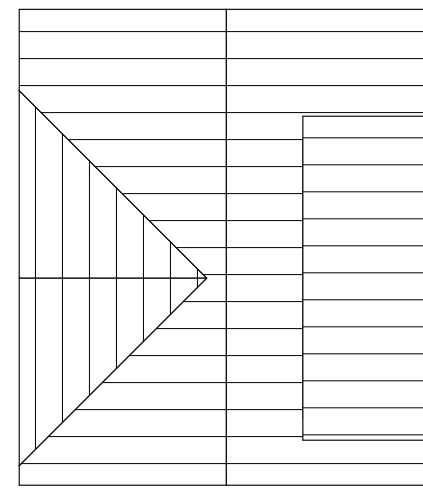
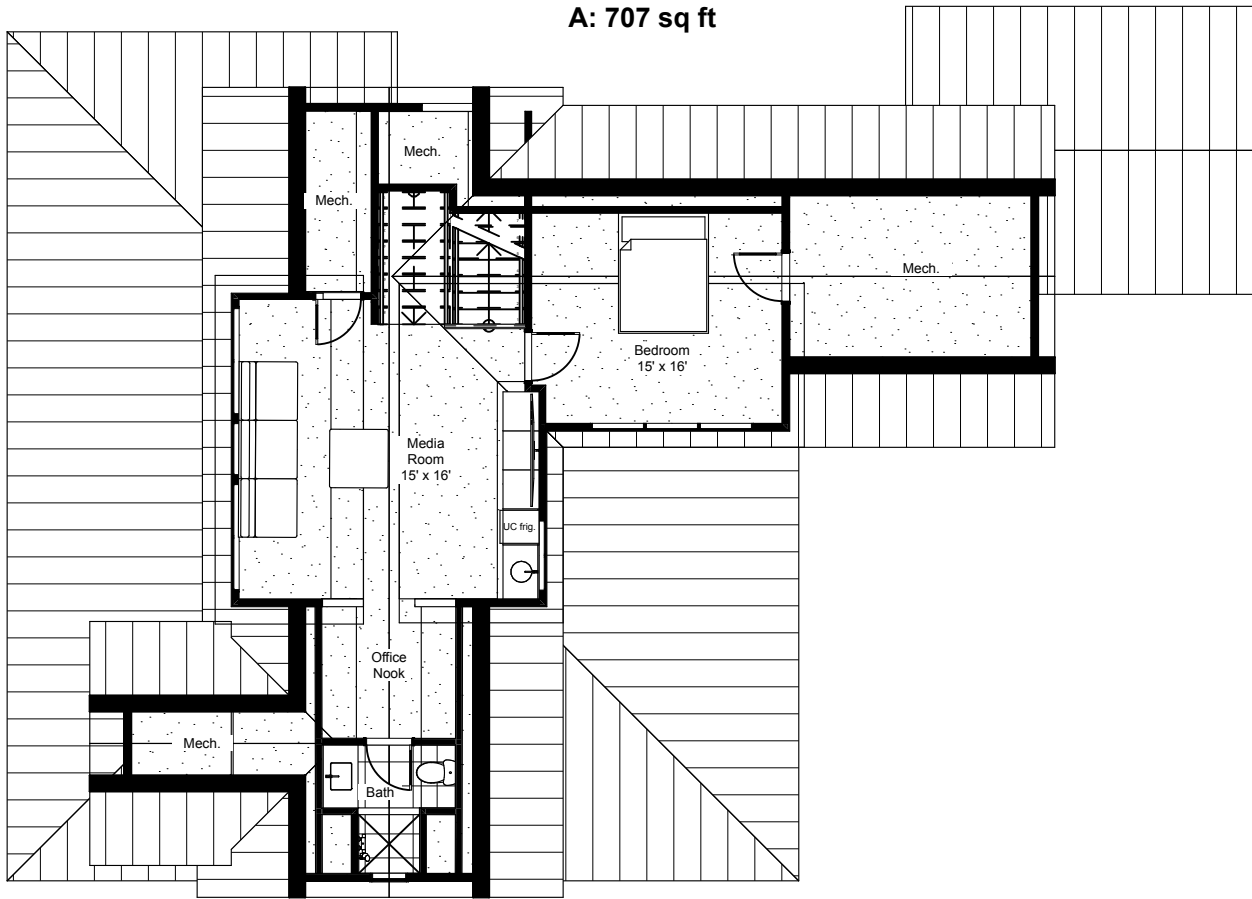
GFA ADU Attic
A: 356 sq ft



2 Second Floor

3/32" = 1'-0"

GFA Attic
A: 707 sq ft



3

House Attic

3/32" = 1'-0"

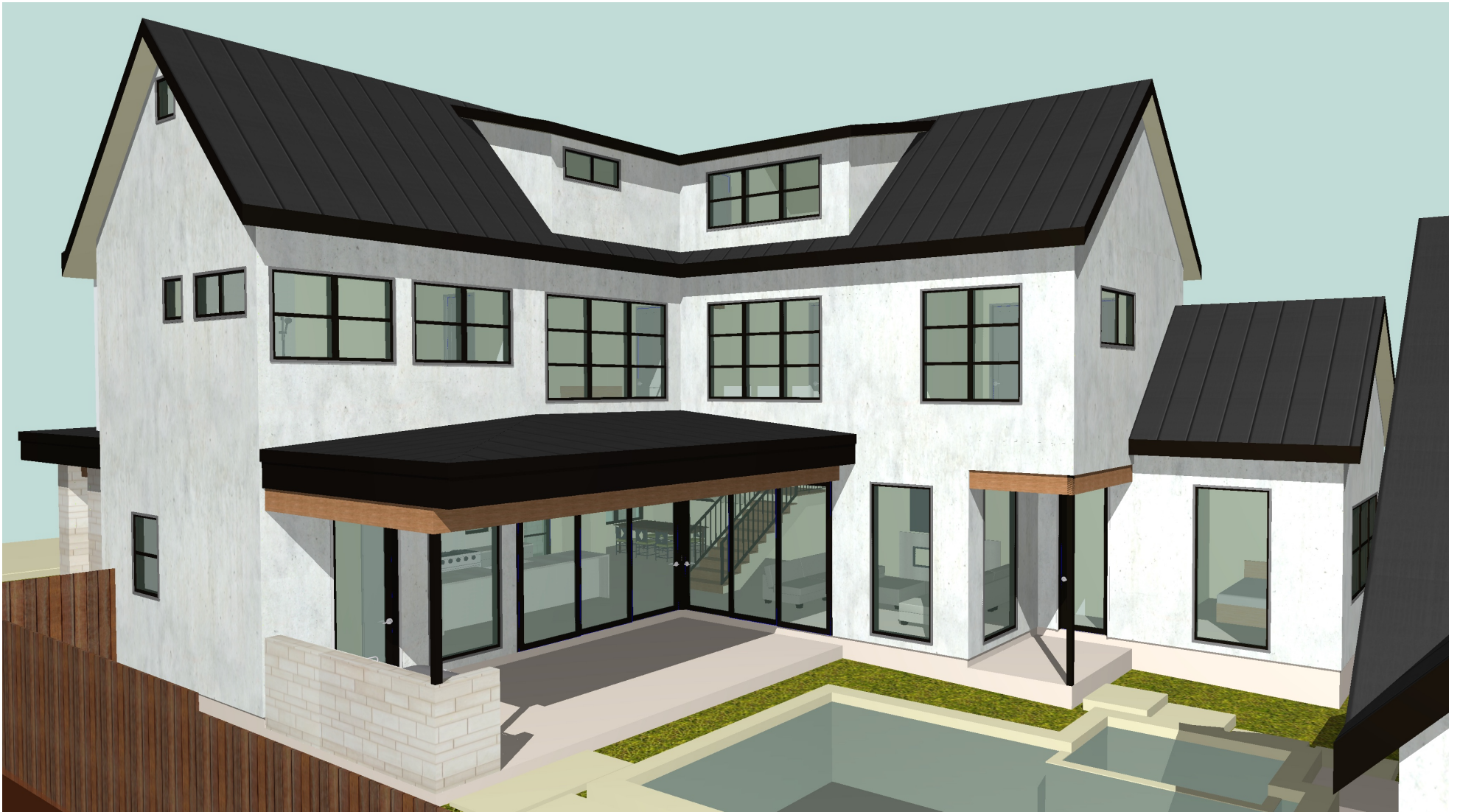
1508 Dexter Street

Areas are Gross Floor Area (GFA)
as defined by the City of
Austin Land Development Code



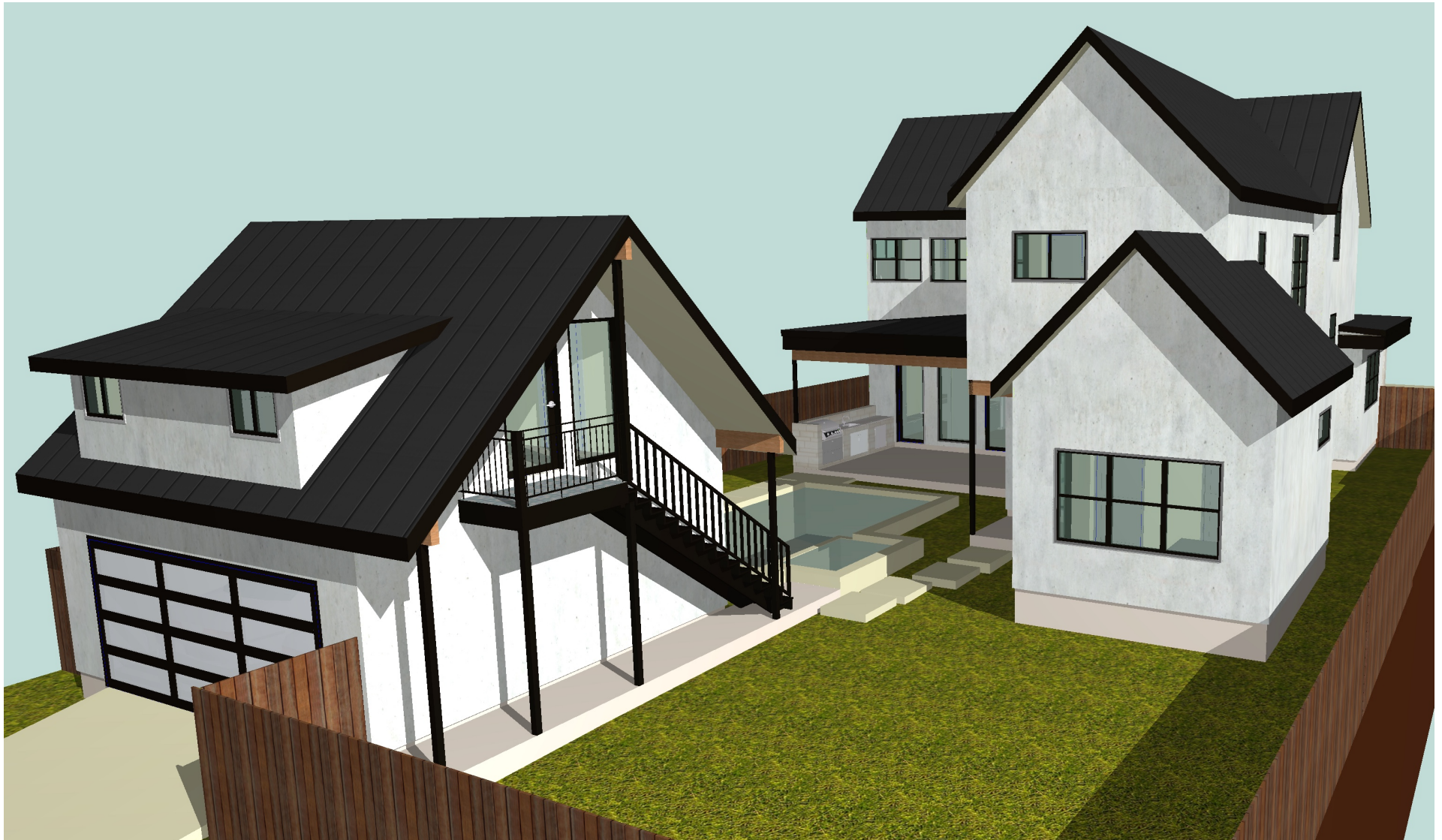
1508 Dexter Street

Areas are Gross Floor Area (GFA)
as defined by the City of
Austin Land Development Code



1508 Dexter Street

Areas are Gross Floor Area (GFA)
as defined by the City of
Austin Land Development Code



1508 Dexter Street

Areas are Gross Floor Area (GFA)
as defined by the City of
Austin Land Development Code